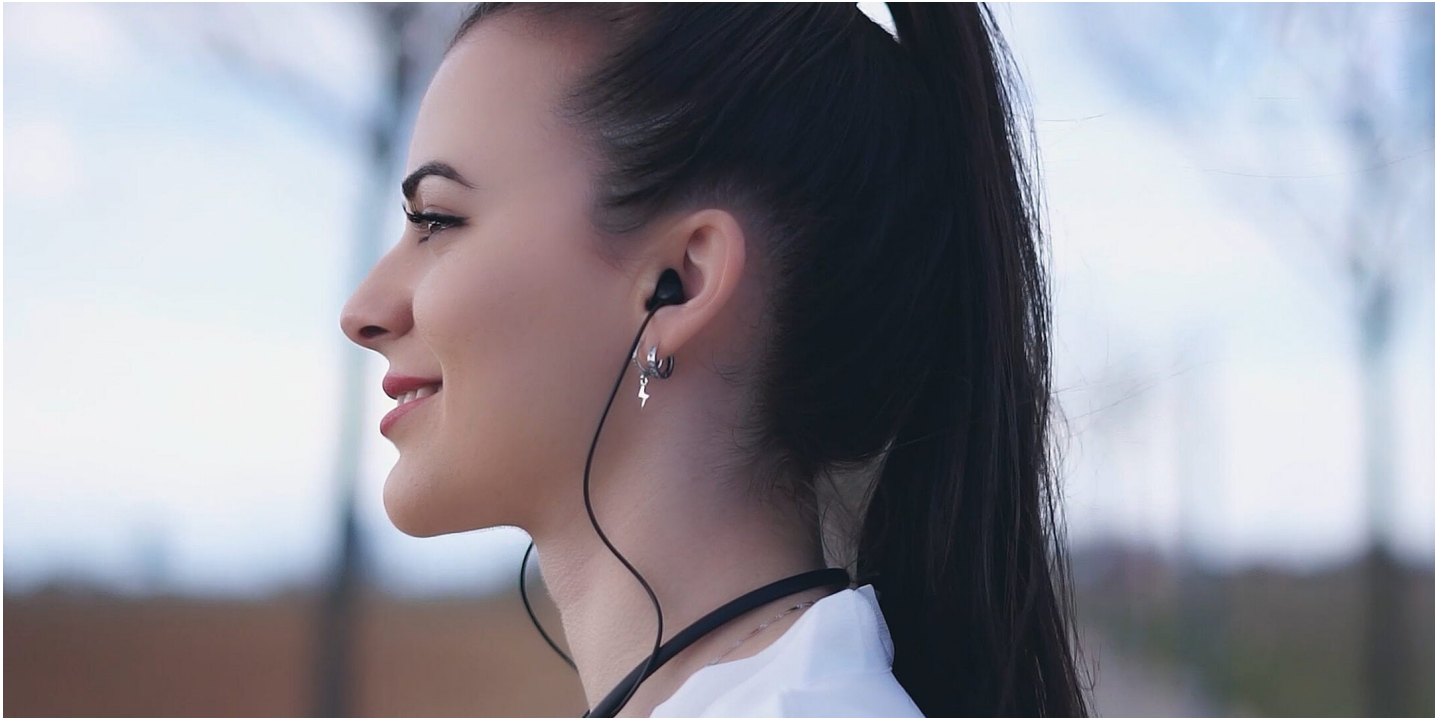


Ear plugs are an essential tool for protecting our hearing in various industries. Whether you work in construction, manufacturing, or even in a noisy office environment, knowing how to properly insert and wear ear plugs is crucial. In this article, we will explore the correct techniques and best practices for using ear plugs effectively.



Choosing the Right Ear Plugs

Before we delve into the proper insertion and wearing techniques, it is important to choose the right ear plugs for your needs. There are different types of ear plugs available, such as foam, silicone, and custom-molded plugs. Each type has its own advantages and disadvantages, so it is essential to consider factors like comfort, noise reduction rating (NRR), and durability when selecting ear plugs.

For example, foam ear plugs are affordable and provide excellent noise reduction, but they may not be suitable for long-term use due to their disposable nature. On the other hand, custom-molded ear plugs offer a perfect fit and can be reused, but they are more expensive. Consider your specific requirements and preferences before making a decision.

Proper Insertion Technique

Now that you have chosen the right ear plugs, it's time to learn how to insert them correctly. Improper insertion can lead to reduced effectiveness and discomfort. Follow these steps for proper insertion:

1. Clean your hands thoroughly to avoid introducing dirt or bacteria into your ears.
2. Gently roll the ear plug between your fingers to compress it into a small, cylindrical shape.
3. Reach over your head with one hand and pull the top of your ear upward to straighten the ear canal.
4. With your other hand, insert the compressed ear plug into the ear canal while maintaining the upward pull on your ear.
5. Hold the ear plug in place for a few seconds to allow it to expand and create a seal.

Remember, it is crucial to insert the ear plugs deep enough into the ear canal to ensure proper sealing and noise reduction. However, be careful not to push them too far, as it can cause discomfort or damage to the ear.

Wearing Ear Plugs Correctly

Inserting the ear plugs properly is just the first step. It is equally important to wear them correctly to maximize their effectiveness. Here are some tips for wearing ear plugs:

- Ensure that the ear plugs are snugly fitted and create a seal in the ear canal.
- Check for any gaps or leaks by covering your ears with your hands and listening for any changes in noise reduction.
- If you are using reusable ear plugs, clean them regularly according to the manufacturer's instructions to maintain hygiene and prolong their lifespan.
- Replace disposable ear plugs as recommended by the manufacturer or when they show signs of wear and tear.

By following these guidelines, you can ensure that your ear plugs provide optimal protection and noise reduction in any industry.

Conclusion

Properly inserting and wearing ear plugs is essential for protecting our hearing in any industry. By choosing the right ear plugs, mastering the correct insertion technique, and wearing them correctly, we can safeguard our ears from excessive noise and prevent potential hearing damage.

Remember to prioritize your hearing health and make use of [ear plugs](#) whenever necessary. Stay informed about the latest advancements in ear plug technology and continue to prioritize safety in your workplace.

References

- [ear plugs](#)

References:

- [OSHA - Noise and Hearing Conservation](#)
- [CDC - Noise and Hearing Loss Prevention](#)
- [World Health Organization - Occupational Noise](#)